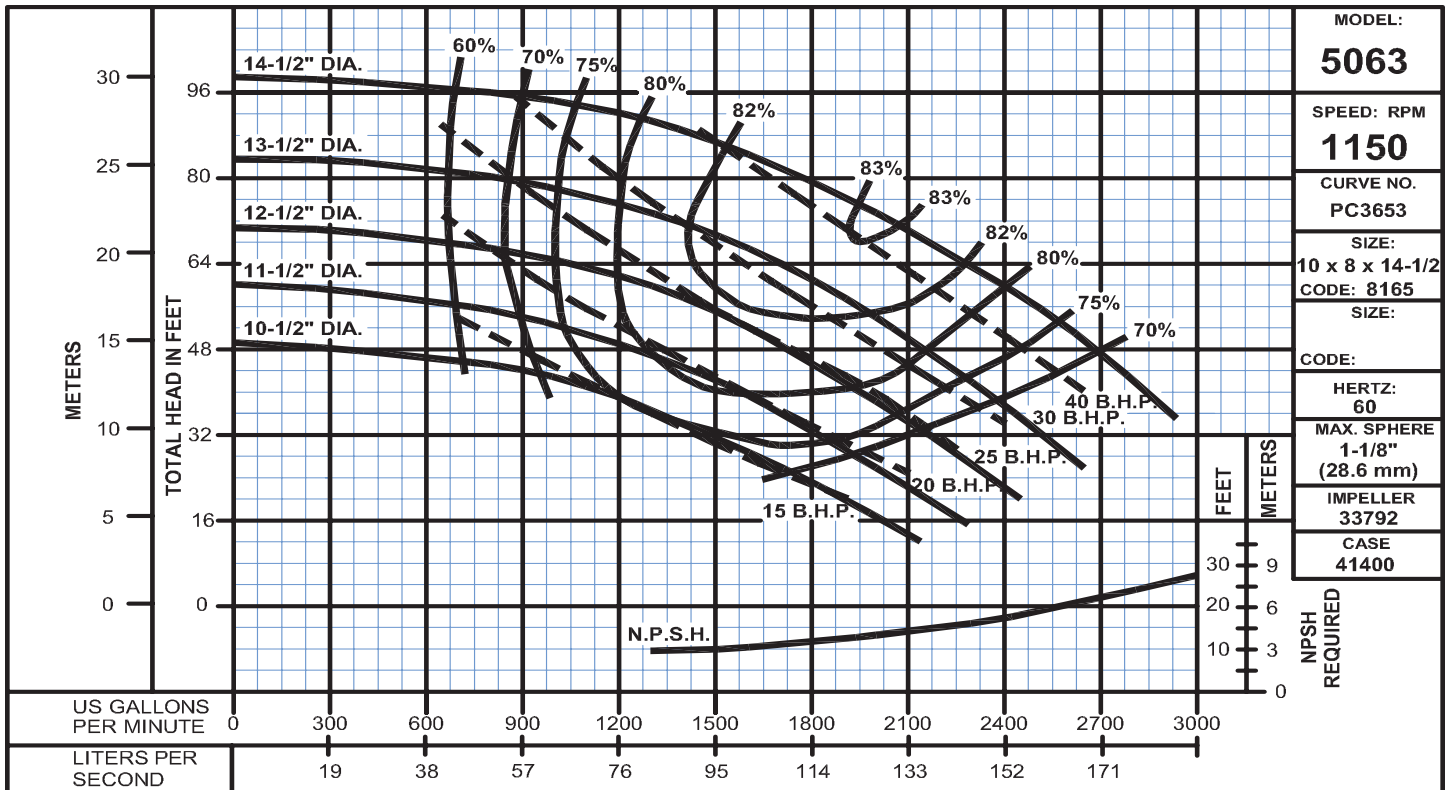
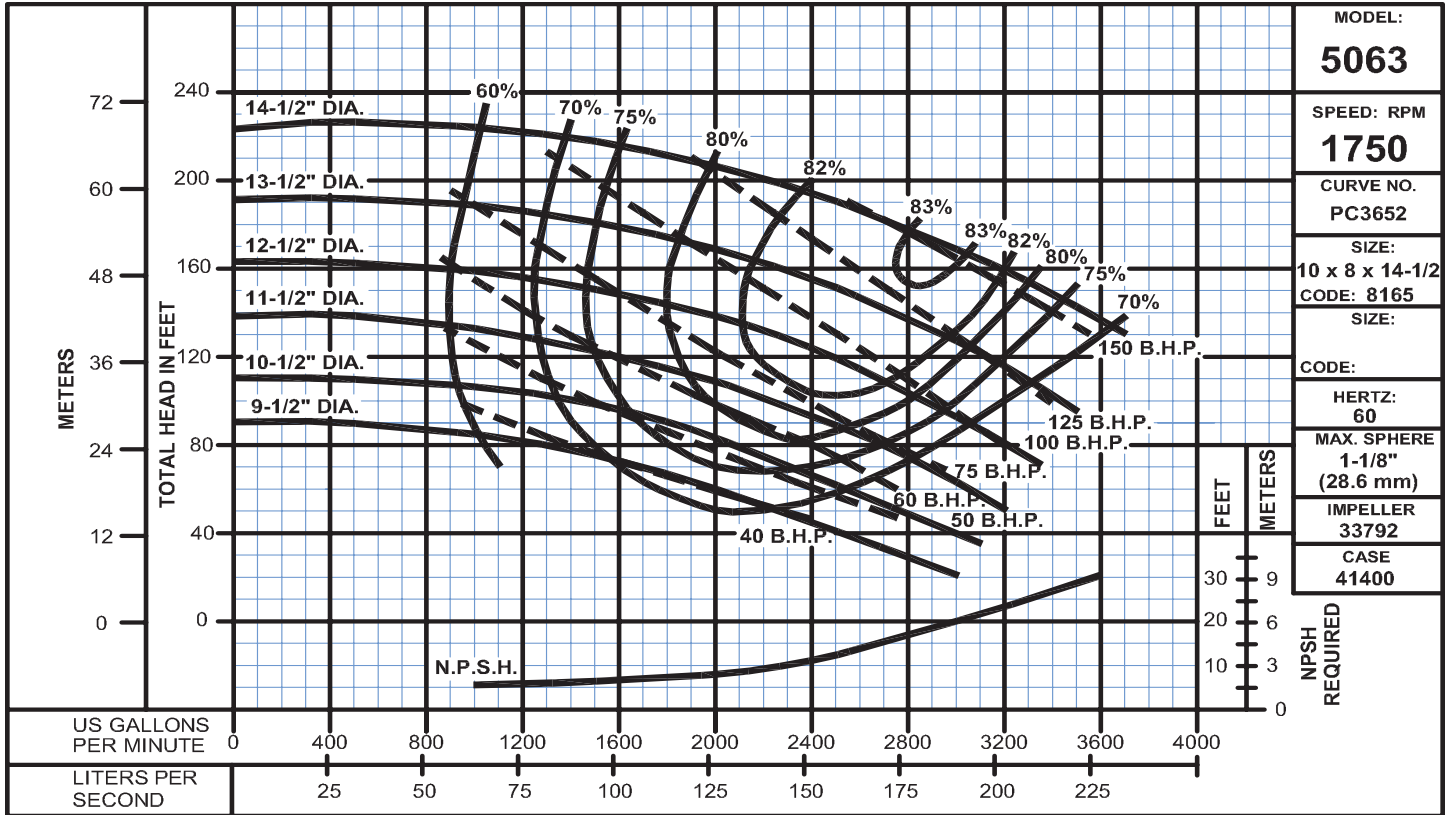


### Horizontal Split Case Centrifugal Pumps



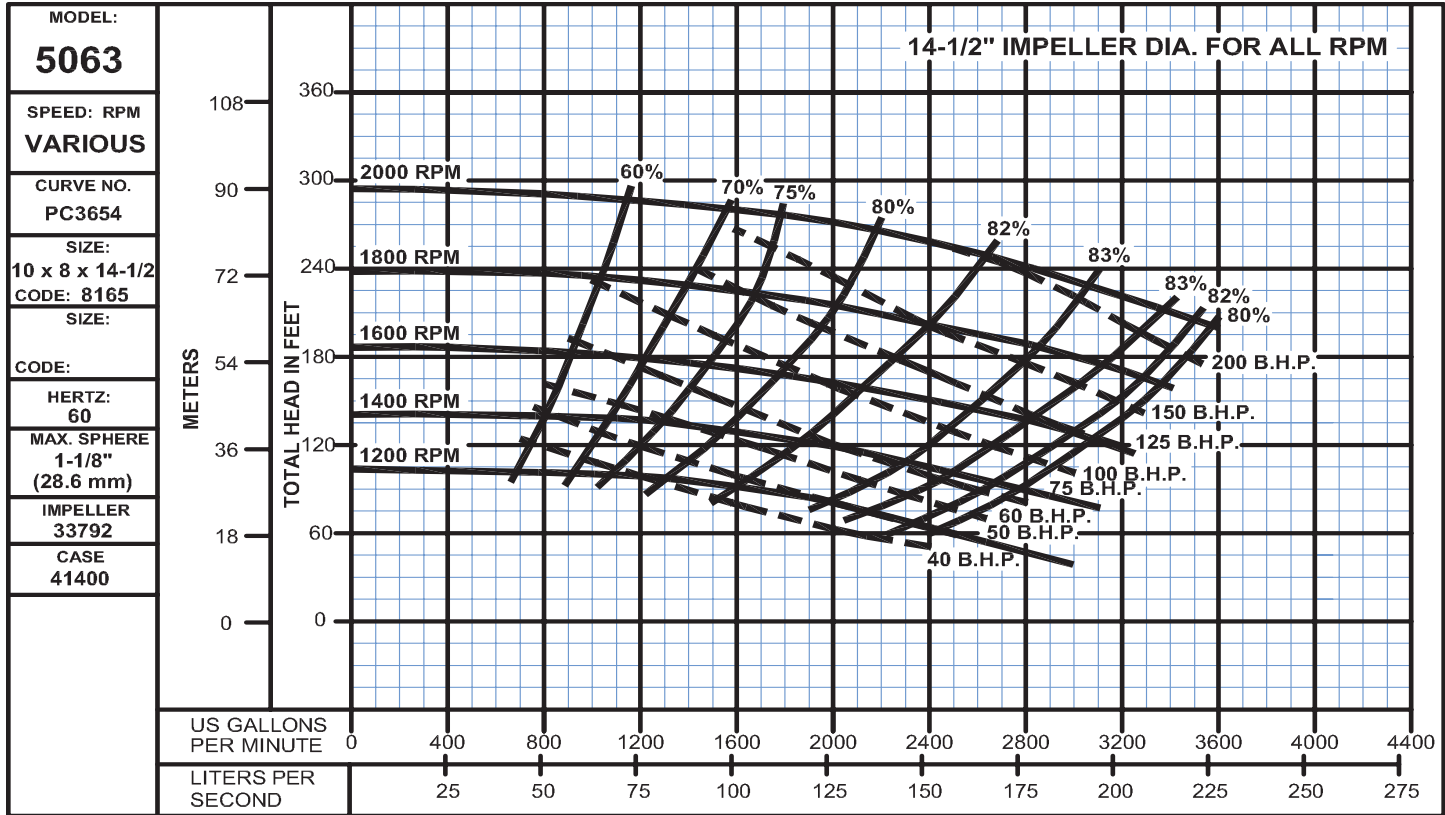
# Fig. 5063

Sizes: 10 x 8 x 14½, Various RPM  
Bulletin 5060A

# DEMING®

www.cranepumps.com

## Horizontal Split Case Centrifugal Pumps



SECTION 29  
PAGE 68  
DATE 6/07

**CRANE**  
A Crane Co. Company

PUMPS & SYSTEMS

USA: (937) 778-8947 • Canada: (905) 457-6223 • International: (937) 615-3598